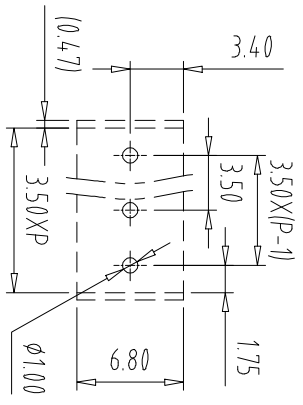
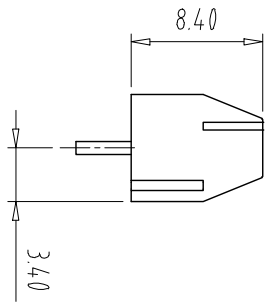
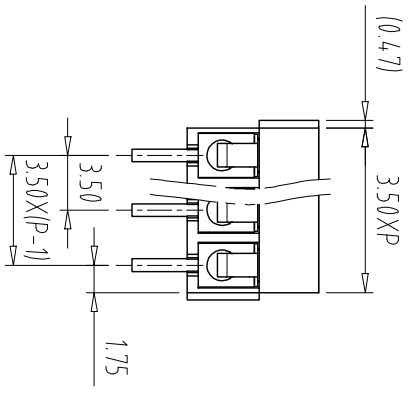
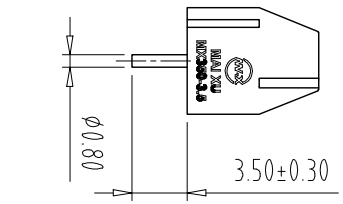
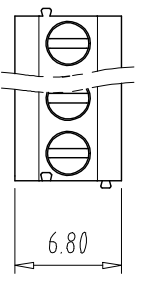


注: 本资料禁止传输、复制、编辑、修改, 以及用其内容进行建设性交流



PCB layout

REV	ECN NO.	CONTENT	CHK	DATE

NOTES1:
UL Standard

Use group	B	C	D
Rated Current	7A	/	10A
Rated Voltage	300V	/	300V

- 1. Torque value: M2, 1.77Lbin
- 2. Torque value: M2, 1.77Lbin
- 3. Wire range: 24-18AWG

IEC Standard

Pollution Degree	3	2	2
Overvoltage Category	III	III	II
Rate Impulse Voltage(kV)	2.5kV	2.5kV	2.5kV
Rate Voltage(V)	160V	250V	320V
Rate Current(A)	10A	10A	10A

- 2. Torque value: M2, 0.2Nm
- 3. wire range: 0.5-1.0mm²

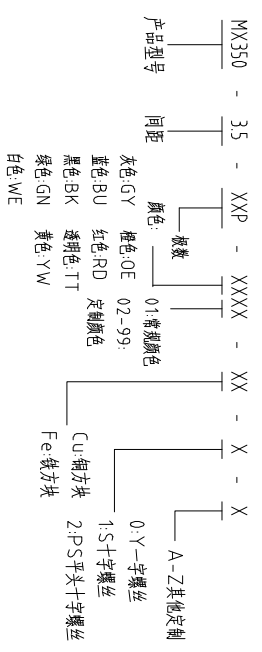
NOTES2:

- 1.Housing: PA66(UL94V-0)
- 2.Solder Pin: Copper alloy(Sn Plated)
- 3.Spring: Stainless Steel
- 4.Screw: Steel(M2,Zn Plated)

NOTES3:

- 1.Pitch: 3.5mm Poles: 02-24P
- 2.Stripping length: 5-6mm
- 3.Operating temperature: -40℃~+105℃
- 4.RoHS Compliance

How to order



Pitch Range In mm	Nominal Dimension Range					
	In mm	In mm	In mm	In mm	In mm	In mm
Over 6	Over 10	Over 24	Over 30	Over 60	Over 100	Over 150
TO 6	TO 10	TO 24	TO 30	TO 60	TO 100	TO 150
±0.15	±0.20	±0.30	±0.30	±0.50	±0.70	±1.00
						±1.30
						±2°

ITEM	NAME OF PART	NO. OF PART	Q'TY	MATERIAL	NOTE
DWG	CHK	DATE	23.09.05	UNITS	MM
CHK	DATE	SCALE	1:1	SHEET/OF	A4 / 1/1
APP	DATE	NAME	MX350-3.5-XXP		



CIXI MAIXU ELECTRONICS CO., LTD.
慈溪市迈旭电子有限公司

DWGNO. 1