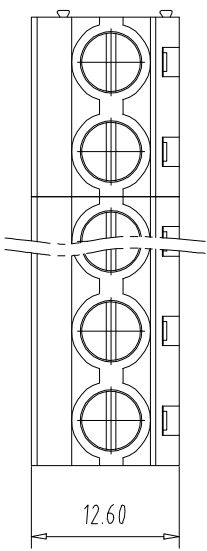


注: 本图禁止传输、复制、编辑、修改, 以及用其内容建设性流

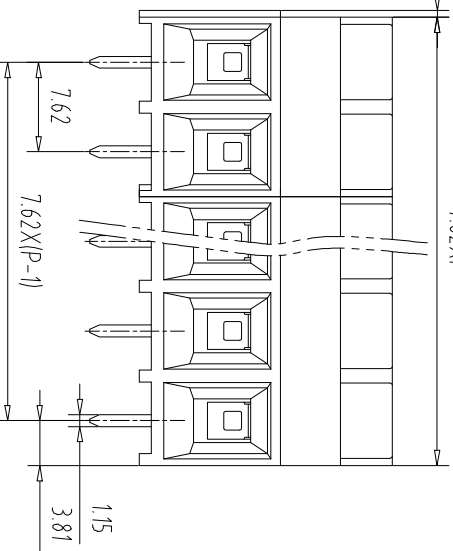
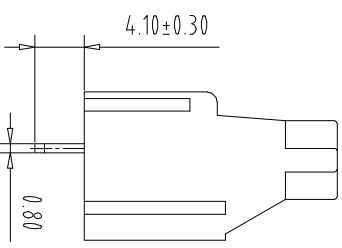
| REV | ECN NO. | CONTENT | CHK | DATE |
|-----|---------|---------|-----|------|
|     |         |         |     |      |



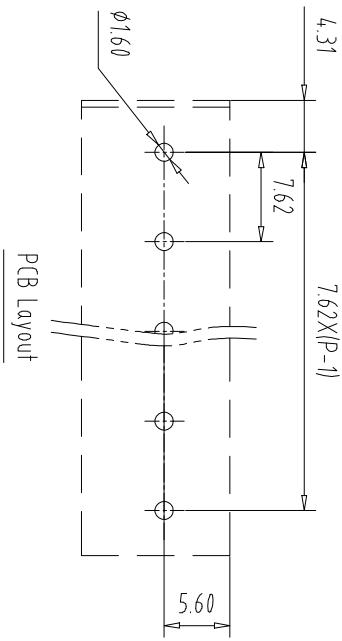
(0.50)

7.62XP

21.60



5.60



PCB layout

NOTES 1:

- UL Standard
- 1.Rating voltage/current: 300V/30A
- 2.withstanding voltage: AC2500V/1Min
- 3.Torque value: M3, 4.43Lb.in
- 4.Wire range: 26~10AWG

IEC Standard

- 1.1.Rating voltage/current: 450V/32A
- 2. Torque value: M3, 0.5Nm
- 3.wire range: 15~4.0mm<sup>2</sup>

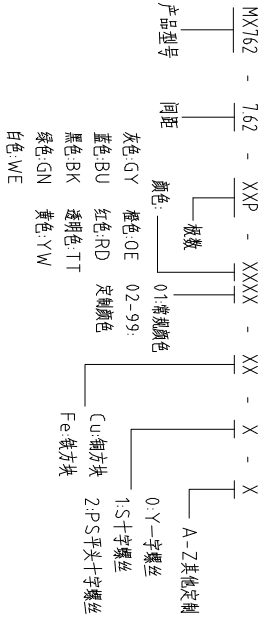
NOTES 2:

- 1.Housing: PA66(UL94V-0)
- 2.Solder Pin: Copper alloy(Sn Plated)
- 3.Cage: Brass(Ni Plated)
- 4.Screw: Steel(M3,Zn Plated)

NOTES 3:

- 1.Pitch: 7.62mm Poles: 02-24P
- 2.Stripping length: 7-8mm
- 3.Operating temperature: -40℃~+105℃
- 4.RoHS Compliance

How to order



| Pitch Range In mm | Nominal Dimension Range In mm |               |               |                | Over 150 | 0.1/10 |       |     |
|-------------------|-------------------------------|---------------|---------------|----------------|----------|--------|-------|-----|
|                   | Over 6 TO 10                  | Over 10 TO 24 | Over 30 TO 60 | Over 60 TO 100 |          |        |       |     |
| ±0.15             | ±0.20                         | ±0.30         | ±0.30         | ±0.50          | ±0.70    | ±1.00  | ±1.30 | ±2° |

| ITEM | NAME OF PART | NO. OF PART | Q'TY  | MATERIAL       | NOTE |
|------|--------------|-------------|-------|----------------|------|
| DWG. | CHK          | DATE        | UNITS | MM             | 1/1  |
| CHK  | DATE         | SCALE       | SCALE | A4             | 1/1  |
| APP. | DATE         | NAME        | NAME  | MX762-7.62-XXP |      |

慈溪市迈旭电子有限公司  
CIXI MAIXU ELECTRONICS CO.,LTD.

DWGNO.