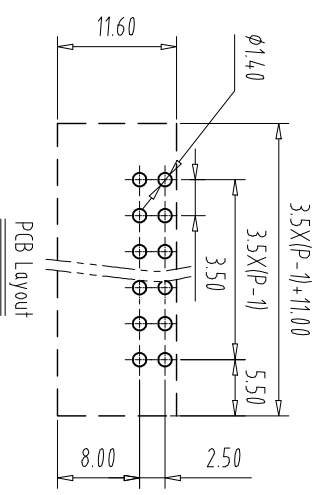
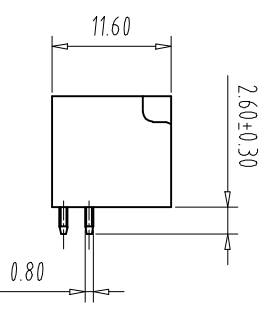
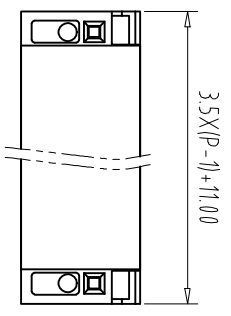
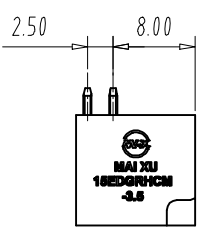
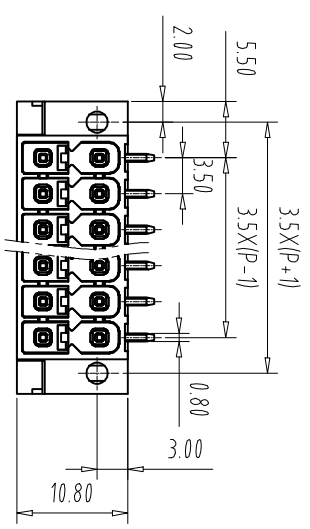


注：本图为基础运输、复测、编档文件，以及附具内详细标注



| REV | ECN NO. | CONTENT | CHK | DATE |
|-----|---------|---------|-----|------|
| | | | | |

NOTES1:
UL Standard

| 1. Use group | B | C | D |
|---------------|------|-----|---|
| Rated Current | 8A | 8A | / |
| Rated Voltage | 150V | 50V | / |

IEC Standard

| 1. Pollution Degree | 3 | 2 | 2 |
|--------------------------|-------|-------|-------|
| Overvoltage Category | III | III | II |
| Rate Impulse Voltage(KV) | 2.5KV | 2.5KV | 2.5KV |
| Rate Voltage(V) | 160V | 160V | 250V |
| Rate Current(A) | 8A | 8A | 8A |

NOTES2:

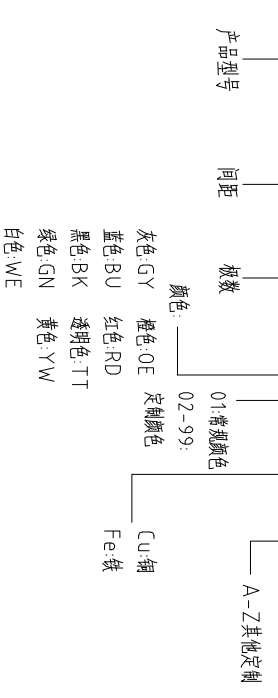
- 1.Housing: PA (UL94V-0)
- 2.Long Solder Pin: Brass (Sn Plated)
- 3.Short Solder Pin: Brass (Sn Plated)
- 4.Nut: Steel (M2,Zn Plated)
- 5.Patch: PA (UL94V-0)

NOTES3:

- 1.Pitch: 3.5mm Poles: 2x(02-24)P
- 2.Operating temperature: -40℃~+105℃
- 3.RoHS Compliance

How to order

MX15EDGRHCM - 35 - 2XXXP - XXXX - X - X



| Pitch Range In mm | | Nominal Dimension Range In mm | | Pitch Range In mm | | Nominal Dimension Range In mm | |
|-------------------|---------|-------------------------------|---------|-------------------|---------|-------------------------------|----------|
| Over 6 | Over 10 | Over 10 | Over 30 | Over 30 | Over 60 | Over 100 | Over 150 |
| TO 6 | TO 10 | TO 24 | TO 30 | TO 60 | TO 100 | TO 150 | TO 150 |
| ±0.15 | ±0.20 | ±0.30 | ±0.30 | ±0.50 | ±0.70 | ±1.00 | ±1.30 |
| | | | | | | | ±2° |

| ITEM | NAME OF PART | NO. OF PART | Q'TY | MATERIAL | NOTE |
|----------------------|--------------|-------------|-------|----------|----------|
| DWG | CHK | DATE | UNITS | MM | SHEET/OF |
| APP | DATE | SCALE | 1:1 | A4 | 1/1 |
| NAME | | | | | |
| MX15EDGRHCM-35-2XXXP | | | | | |

慈溪市迈旭电子有限公司
CIXI MAIXU ELECTRONICS CO.,LTD.

DWGNO. 1