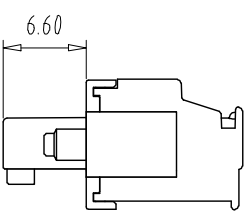
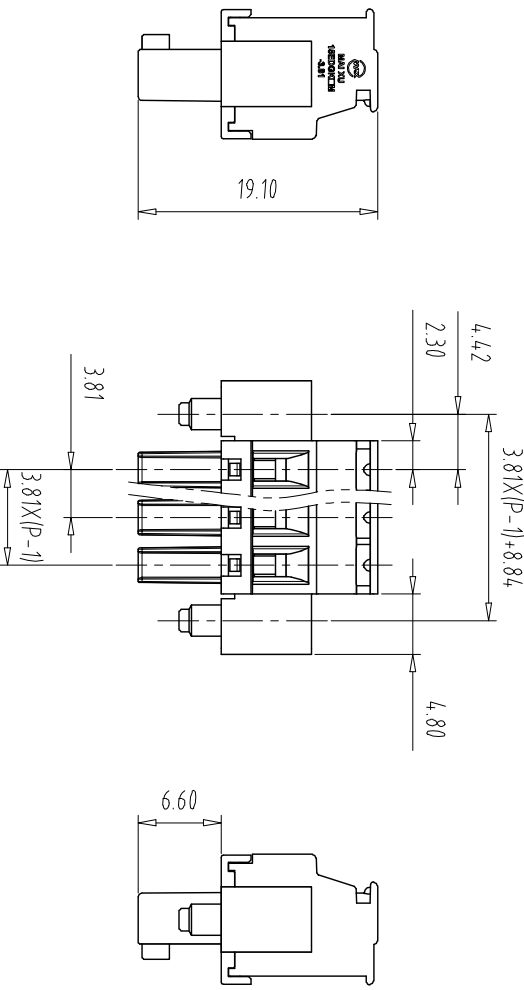
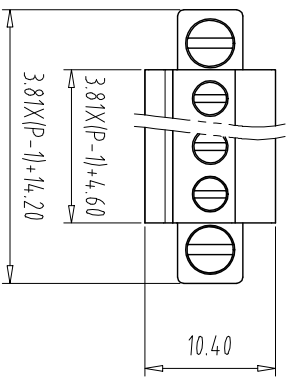


注: 本型为深基绝缘、复绕、端脚式结构, 以及附具内穿芯式结构



REV	ECN NO.	CONTENT	CHK	DATE

NOTES:

- 1. Use group: B, C, D
- Rated Current: 8A, /, 8A
- Rated Voltage: 300V, /, 300V
- 2. Torque value: M2.0, 1.77Lbin
- 3. Wire range: 28~16AWG

IEC Standard

Pollution Degree	3	2	2
Overvoltage Category	III	III	II
Rate Impulse Voltage(KV)	2.5KV	2.5KV	2.5KV
Rate Voltage(V)	160V	160V	250V
Rate Current(A)	7A	7A	7A

- 2. Torque value: M2, 0.2Nm
- 3. wire range: 0.2~1.5mm²

NOTES2:

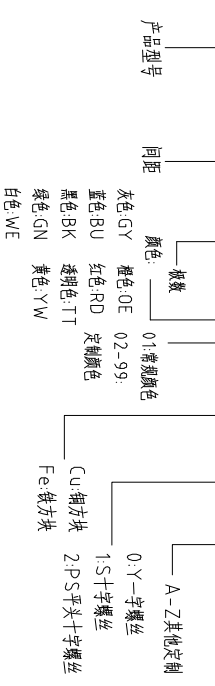
- 1.Housing: PA66 (UL94V-0)
- 2.Cover: PA66 (UL94V-0)
- 3.Clamp: Copper alloy (Ni Plated)
- 4.Cage: Brass (Ni Plated)
- 5.Screw1: Steel (M2,Zn Plated)
- 6.Screw1: Steel (M2.5,Zn Plated)

NOTES3:

- 1.Pitch: 3.81mm Poles: 02-24P
- 2.Stripping length: 6-7mm
- 3.Operating temperature: -40℃~+105℃
- 4.RoHS Compliance

How to order

MX15EDGKBM - 381 - XXP - XXXX - XX - X - X



Pitch Range In mm	Nominal Dimension In mm	Range
Over 6 TO	Over 10 TO	Over 30 TO
Over 10 TO	Over 24 TO	Over 60 TO
Over 10 TO	Over 30 TO	Over 60 TO
Over 10 TO	Over 30 TO	Over 100 TO
Over 10 TO	Over 30 TO	Over 150 TO
Over 150		

mm	mm	mm	mm	mm	mm	mm	mm	mm	mm	mm	mm
±0.15	±0.20	±0.30	±0.30	±0.50	±0.70	±1.00	±1.30	±2°			

ITEM	NAME OF PART	NO. OF PART	Q'TY	MATERIAL	NOTE
DWG.	CHK	DATE	UNITS	MM	SHEET/OF
APP.	DATE	SCALE	1:1	A4	1/1

MAIXU 慈溪市迈旭电子有限公司
 CIXI MAIXU ELECTRONICS CO.,LTD.
 NAME: MX15EDGKBM-381-XXP
 DWGNO.