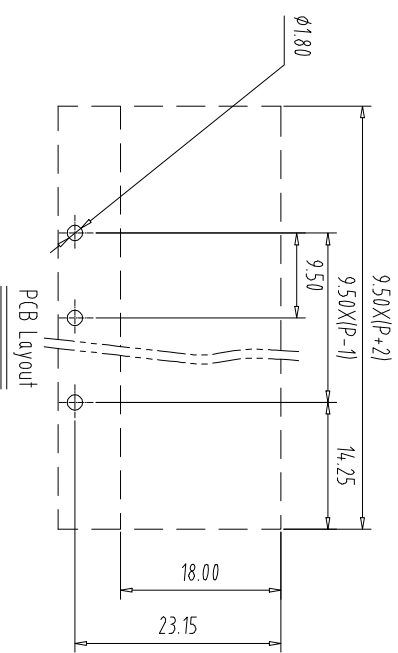
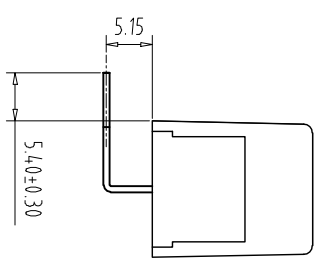
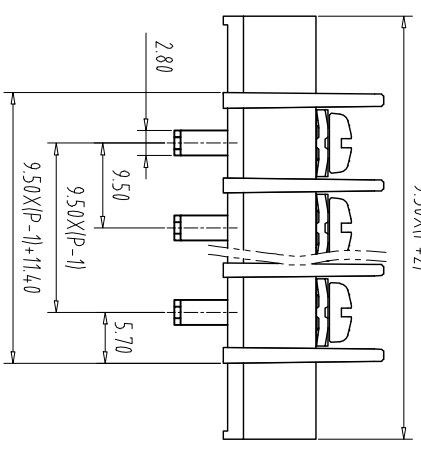
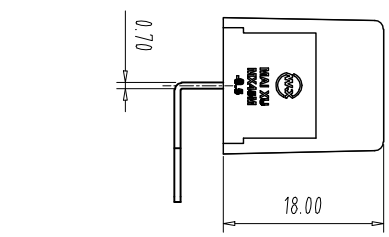
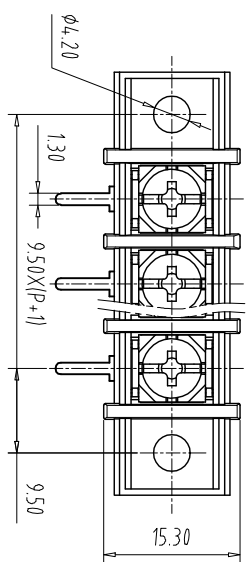


注: 本图仅供禁止传输、复制、编辑被控, 以及附具内容建设依流

REV	ECN NO.	CONTENT	CHK	DATE



Pitch Range In mm	Nominal Dimension Range In mm						Pitch Range In mm
	Over	TO	Over	TO	Over	TO	
6	6	10	10	24	30	60	100
10	10	24	30	60	100	150	150
±0.15	±0.20	±0.30	±0.30	±0.50	±0.70	±1.00	±1.30

NOTES 1:
UL Standard

1	Use group	B	C	D
	Rated Current	20A	/	/
	Rated Voltage	300V	/	/

2. Torque value: M4, 10.53Lb.in
3. Wire range: 22~12AWG

IEC Standard

1	Pollution Degree	3	2	2
	Overvoltage Category	III	II	II
	Rate Impulse Voltage(KV)	/	4	/
	Rate Voltage(V)	/	400V	/
	Rate Current(A)	/	24A	/

2. Torque value: M4, 1.2Nm
3. wire range: 0.5-4.0mm²

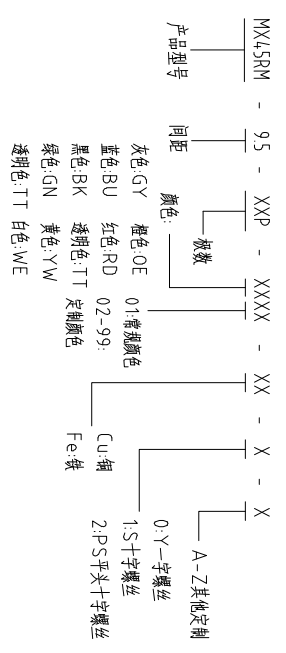
NOTES 2:

- 1. Housing: PA66(UL94V-0)
- 2. Solder Pin: Copper alloy(Sn Plated)
- 3. Screw: Steel(M4, Ni Plated)

NOTES 3:

- 1. Pitch: 9.50mm Poles: 02-24P
- 2. Operating temperature: -40°C~+105°C
- 3. RoHS Compliance

How to order



ITEM	NAME OF PART	NO. OF PART	Q'TY	MATERIAL	NOTE
DWG.	CHK	DATE	DATE	UNITS	MM
APP.	DATE	SCALE	SCALE	SHEET/OF	1/1
				A4	
				NAME	MX45RM-95-XXP
				DWGNO.	

CIXI MAIXU ELECTRONICS CO.,LTD.
慈溪市迈旭电子有限公司